

BC2204PE2E-65W

6-Port 10/100M Unmanaged PoE Switch

Datasheet

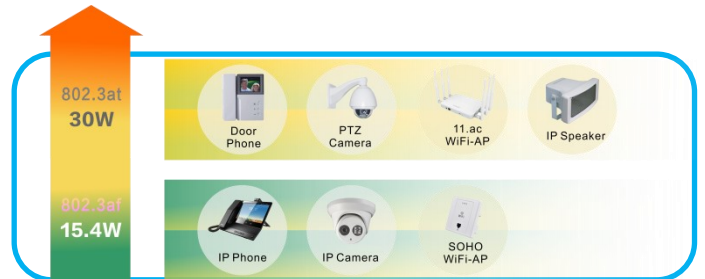


Key Features:

- Ports:** Provide 4*10/100Mbps PoE ports and 2 *100Mbps Uplink
- PoE Standard:** IEEE802.3af/at Power over Ethernet (PoE) Compliant
- Total Power:** Total power budget of 65W and 30W for all single PoE ports
- Self-adaption:** RJ45 port supports 10/100Mbps Auto MDI/MDIX
- Extend Mode:** Extend PoE up to 250m on one single cable with 10Mbps
- Wide Application:** Designed for Wifi AP and IP Security camera.VoIP etc
- Surge protection:** Protect the device from lightning surges and others electrical hazards
- Considerate Design:** Exquisite compact size with fanless design
- Easy to use:** Plug and play, No configuration required

Versatile PoE Port

Featuring 4* 10/100Mbps PoE ports which support IEEE802.3af/at standard and 2 * 100Mbps Uplink ports. the PoE switch provides Maximun power budget of 65W and 30W for single PoE ports sepectively,allowing users to have several different Networking products configured

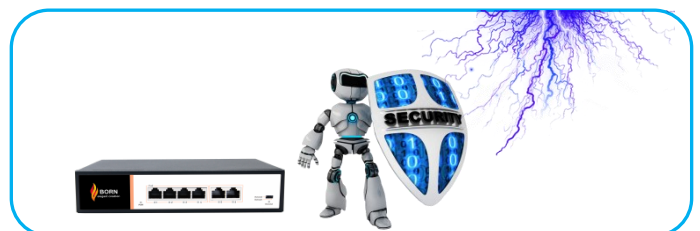


Flexible Extend Mode

With the extend mode, the PoE Switch Series is able to offer more flexible choices for long range transmission, extending the distance up to 250m with 10Mbps, which is greatly helpful to bring better user experience.

Surge Protection Design

Reaching 6KV surge protection, the PoE ports owns the capacity to keep the PoE Switch from lightning strikes and other electrical surges, offering reliable performance even in some harsh environments.



BC2204PE2E-65W

4-Port PoE Switch with 2 100Mbps Uplink

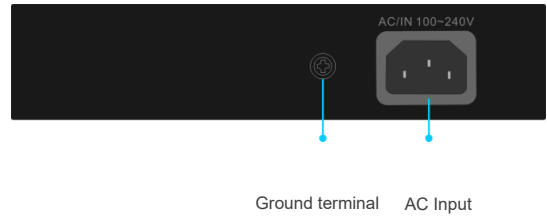
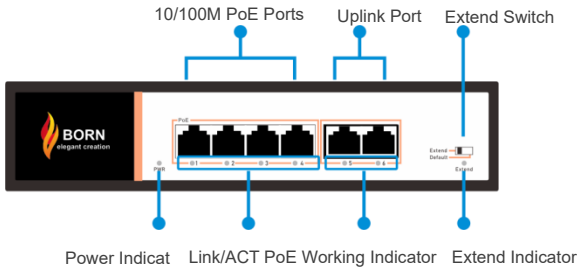
Technical Datasheet

Model	BC2204PE2E-65W	
Hardware Specifications		
Network Connector	6 10/100BASE-T RJ45 auto MDI/MDIX ports	
PoE Port	4 10/100Mbps POE PSE port	
LED indicators	Power Indicator: PWR(green). Network Indicator: Link(yellow) PoE Working Indicator: PoE(green)	
Switch Architecture	Store and Forward	
Transmission model	IEEE802.3X full-duplex and Backpressure half-duplex	
Switch Performance	Backplane bandwidth	1.6Gbps
	Packet forwarding rate	1.25Mpps
	MAC address	2k
Power requirement	AC100-240V 50/60Hz DC52V/1.25A	
ESD Protection	6KV ESD	
Dimension(W×D×H)	202mm x 140mm x 44.5mm(7.95in x 5.51in x 1.75in)	
Weight	1Kg	
Power over Ethernet (PoE) Specifications		
Network standard	IEEE802.3i 10 BASE-T	
	IEEE802.3u 100 BASE-TX	
	IEEE802.3x Flow Control	
	IEEE802.3af Power over Ethernet	
	IEEE802.3at Power over Ethernet	
PoE Standard	IEEE802.3az EEE	
	IEEE 802.3af Power over Ethernet/PSE IEEE 802.3at Power over Ethernet Plus/PSE	
PoE Supply Type	1/2(+), 3/6(-) End-span	
PoE Power Output	Per Port 52V DC, 300mA. max. 15.4 watts (IEEE 802.3af)	
	Per Port 52V DC, 600mA. max. 30 watts (IEEE 802.3at)	
PoE Power budget	65W	
Environment		
Environment specification	Operating temperature: -20°C~55°C, operating humidity: 5%~95%	
	Storage temperature: -40°C~75°C, storage humidity: 5%~95%	
Safety	FCC Part15 Class A,CE.RoHs	

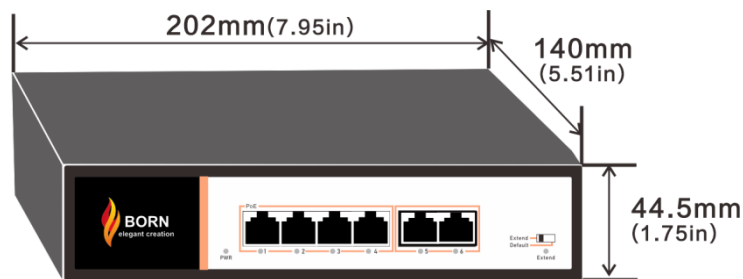
BC2204PE2E-65W

4-Port 10/100M PoE Switch with 2 100M Uplink

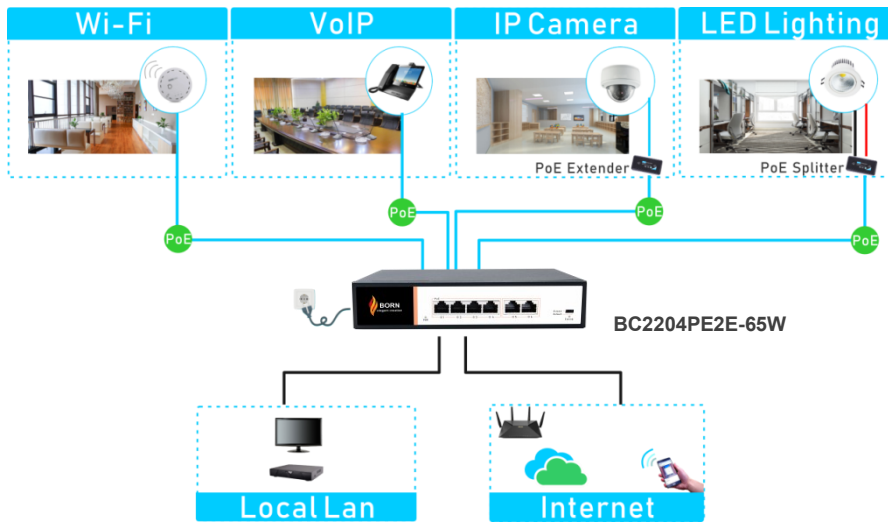
Interfaces



Structure Diagrams



Applications



Ordering Information

BC2204PE2E-65W	6 Ports 10/100Mbps PoE switch,6KV surge protection,IEEE802.3af/at
----------------	---

337 Forest Road
London, United Kingdom

+44 7859 571344



Info@bornelectronics.com



https://bornelectronics.com